

## Montgomery County Families: Reserve your spot!

Exciting news: our new near-site childcare center operated by KinderCare Learning Companies is ready to accept enrollments!

The Montgomery County Early Learning Center will open in Spring 2025 and will serve 124 children up to age 5. The sparkly new center will include 11 classrooms, an indoor gross motor room, and four modern, state-of-the-art playgrounds. Meals and snacks are included with tuition.

KinderCare's early education programs inspire a love of learning with teachers who believe in your child and give them the freedom to be themselves. Kids will love having a reliable routine, hands-on learning, and social time with friends. Save your spot!

Learn more about your childcare benefits at [www.kindercare.com/mcelc](http://www.kindercare.com/mcelc) or to enroll visit the center's web page at [www.kindercare.com/montgomerycountyelc](http://www.kindercare.com/montgomerycountyelc).

KinderCare's enrollment specialists are also here for you. Contact their team by calling 833-905-3276 or emailing [enrollnow@kindercare.com](mailto:enrollnow@kindercare.com).





## A new KinderCare Learning Center is opening near you!

**As working parents, you want to know your kids are safe and having fun while you're working.**

Montgomery County Early Learning Center is opening right in your neighborhood in the spring of 2025 at 110 W. South Boulevard in Crawfordsville. To support working families, your company has sponsored the development of the center to include subsidized tuition rates - making quality child care more accessible than ever!

Montgomery County Early Learning Center will serve 124 children ages 6 weeks through prekindergarten. It will have eleven total classrooms, an indoor gym, state-of-the-art outdoor play space, plus meals and snacks included with tuition.

---

### **Your child care benefits make life easier.**

Your company makes the cost of child care more manageable by offering the following benefits to all employees:

Tuition Benefit includes subsidized tuition at Montgomery County Early Learning Center and a 10% savings on tuition for full-time, part-time, or drop-in child care at other KinderCare Learning Centers nationwide, or at Champions extended-day learning programs at participating elementary schools.

## Four ways we give your whole family a boost.



### A Healthy, Safe Environment

Our centers are safe, secure environments for kids to grow and thrive. We've even earned the WELL Health-Safety Rating™ to prove it!



### Convenience and Flexibility

Our centers are conveniently located right in your neighborhood, offering flexible full- and part-time\* scheduling options so you can keep life moving. Peace of mind? Check!



### Expert-Designed Curriculum

Here's what we know about our curriculum: It works. In fact, the longer kids stay with us, the more prepared they are for elementary school.



### Trustworthy Teachers

Our teachers are talented, trained, and top notch—they're the heart of our programs! They support your child every step of the way.

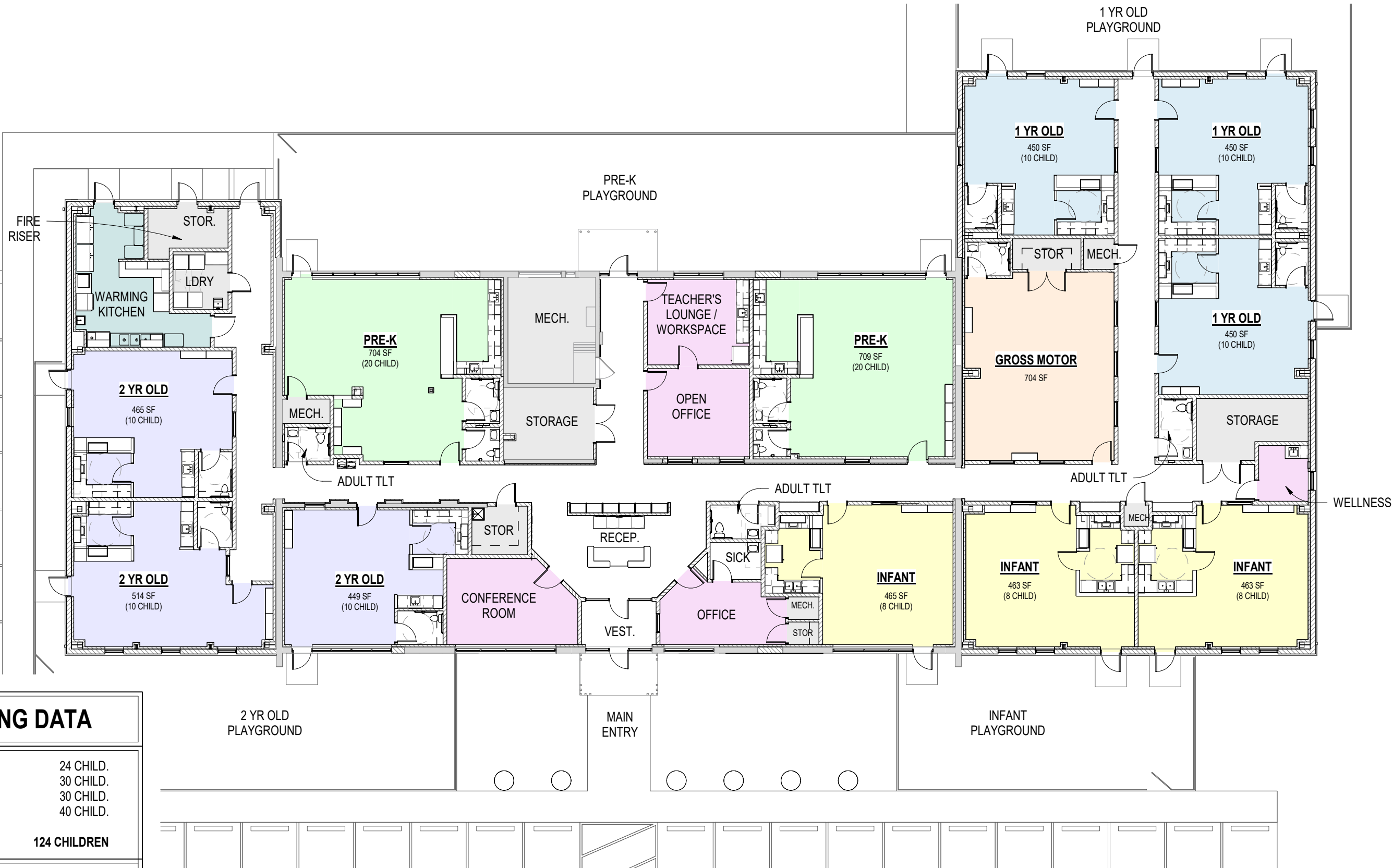


MONTGOMERY COUNTY

# Early Learning Center

## Learn more.

To learn more about your benefits, talk with your HR representative. To learn more about our programs or the center opening near you, visit [KinderCare.com/montgomerycountyelc](https://KinderCare.com/montgomerycountyelc) or call 833-905-3276.



### BUILDING DATA

INFANT	24 CHILD.
1 YEAR OLD	30 CHILD.
2 YEAR OLD	30 CHILD.
3-5 YEAR OLD	40 CHILD.

**TOTAL: 124 CHILDREN**

1 YR OLD	KITCHEN
2 YR OLD	MECHANICAL
ADMIN	PRE-K
GROSS MOTOR	STORAGE
INFANT	



**OVERALL FLOOR PLAN**  
SCALE: 1/16" = 1'-0"

## MONTGOMERY COUNTY EARLY LEARNING CENTER

**PRELIMINARY FLOOR PLANS**  
110 WEST SOUTH BOULEVARD  
CRAWFORDSVILLE, IN 47933  
FEBRUARY 15, 2024 | PROJ #2213

